



Product Service

# CERTIFICATE

No. Z2 17 09 99237 001

**Holder of Certificate:** **Jiangsu Eco Green Energy Co., Ltd**  
 3333 New Tong Jue Road  
 Tongzhou District  
 226300 Nantong, Jiangsu  
 PEOPLE'S REPUBLIC OF CHINA



**Certification Mark:**

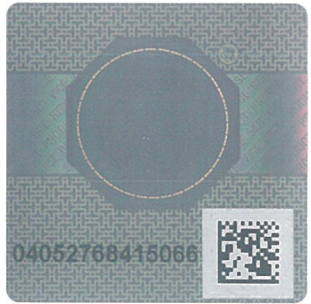


**Product:** **Crystalline Silicon Terrestrial Photovoltaic (PV) Modules**  
**Poly-Crystalline Silicon Photovoltaic Module**

The product was tested on a voluntary basis and complies with the essential requirements. The certification mark shown above can be affixed on the product. It is not permitted to alter the certification mark in any way. In addition the certification holder must not transfer the certificate to third parties. See also notes overleaf.

**Test report no.:** 704061713602-00

**Valid until:** 2022-09-11



**Date,** 2017-09-19

( Zhulin Zhang )

Page 1 of 2

**CERTIFICATE****No. Z2 17 09 99237 001****Model(s):**

EGE-300P-72, EGE-305P-72, EGE-310P-72, EGE-315P-72,  
 EGE-320P-72, EGE-325P-72, EGE-330P-72, EGE-335P-72,  
 EGE-250P-60, EGE-255P-60, EGE-260P-60, EGE-265P-60,  
 EGE-270P-60, EGE-275P-60, EGE-280P-60, EGE-225P-54,  
 EGE-230P-54, EGE-235P-54, EGE-240P-54, EGE-245P-54,  
 EGE-250P-54, EGE-200P-48, EGE-205P-48, EGE-210P-48,  
 EGE-215P-48, EGE-220P-48, EGE-10P-36, EGE-15P-36,  
 EGE-20P-36, EGE-25P-36, EGE-30P-36, EGE-35P-36,  
 EGE-40P-36, EGE-45P-36, EGE-50P-36, EGE-55P-36,  
 EGE-60P-36, EGE-65P-36, EGE-70P-36, EGE-75P-36,  
 EGE-80P-36, EGE-85P-36, EGE-90P-36, EGE-95P-36,  
 EGE-100P-36, EGE-105P-36, EGE-110P-36, EGE-115P-36,  
 EGE-120P-36, EGE-125P-36, EGE-130P-36, EGE-135P-36,  
 EGE-140P-36, EGE-145P-36, EGE-150P-36, EGE-155P-36,  
 EGE-160P-36, EGE-165P-36, EGE-170P-36.

**Parameters:**

Rated Output Power  
 at STC:

300 W, 305 W, 310 W, 315 W,  
 320 W, 325 W, 330 W, 335 W,  
 250 W, 255 W, 260 W, 265 W,  
 270 W, 275 W, 280 W, 225 W,  
 230 W, 235 W, 240 W, 245 W,  
 250 W, 200 W, 205 W, 210 W,  
 215 W, 220 W, 10 W, 15 W,  
 20 W, 25 W, 30 W, 35 W,  
 40 W, 45 W, 50 W, 55 W,  
 60 W, 65 W, 70 W, 75 W,  
 80 W, 85 W, 90 W, 95 W,  
 100 W, 105 W, 110 W, 115 W,  
 120 W, 125 W, 130 W, 135 W,  
 140 W, 145 W, 150 W, 155 W,  
 160 W, 165 W, 170 W.

Construction:

Framed with Junction box,  
 Cable and Connectors.

Test Laboratory:

Yangzhou Opto-Electrical  
 Products Testing Institute,  
 No.10 West Kaifa Road,  
 Yangzhou, 225009 Jiangsu,P.R.China.

Application Class:

Class A

Fire Safety Class:

Class C

Maximum System Voltage:1500 V DC

**Tested  
 according to:**

IEC 61215(ed.2)  
 IEC 61730-1(ed.1);am1;am2  
 IEC 61730-2(ed.1);am1  
 EN 61730-1:2007/A2:2013  
 EN 61730-2:2007/A1:2012

**Production  
 Facility(ies):**

99237

Page 2 of 2